

This discussion paper is/has been under review for the journal Ocean Science (OS).
Please refer to the corresponding final paper in OS if available.

Improved sea level record over the satellite altimetry era (1993–2010) from the Climate Change Initiative Project

**M. Ablain¹, A. Cazenave², G. Larnicol¹, M. Balmaseda¹¹, P. Cipollini⁷,
Y. Faugère¹, M. J. Fernandes^{10,14}, O. Henry², J. A. Johannessen³, P. Knudsen⁶,
O. Andersen⁶, J. Legeais¹, B. Meyssignac², M. Picot¹², M. Roca⁸, S. Rudenko⁹,
M. G. Scharffenberg⁴, D. Stammer⁴, G. Timms⁵, and J. Benveniste¹³**

¹Collecte Localisation Satellite(CLS), Ramoville Saint-Agne, France

²Laboratoire d'Etudes en Géophysique et Océanographie Spatiales (LEGOS), Toulouse, France

³Nansen Environmental and Remote Sensing Center (NERSC), Bergen, Norway

⁴University of Hamburg, Hamburg, Germany

⁵CGI, London, UK

⁶Technical University of Denmark (DTU), Lyngby, Denmark

⁷National Oceanography Centre (NOC), Southampton, UK

⁸isardSAT, Barcelona, Catalunya, Spain

⁹Helmholtz Centre Potsdam GFZ German Research Centre for Geosciences, Telegrafenberg, 14473 Potsdam, Germany

2029

¹⁰Faculdade de Ciências, Universidade do Porto, 4169-007 Porto, Portugal

¹¹ European Centre for Medium-Range Weather Forecasts (ECMWF), Reading, UK

¹²Centre National d'Etudes Spatiales (CNES), Toulouse, France

¹³European Space Agency (ESA), ESRIN, Frascati, Italy

¹⁴Centro Interdisciplinar de Investigação Marinha e Ambiental (CIIMAR/CIMAR), Universidade do Porto, 4050-123 Porto, Portugal

Received: 7 July 2014 – Accepted: 16 July 2014 – Published: 21 August 2014

Correspondence to: M. Ablain (mablain@cls.fr)

Published by Copernicus Publications on behalf of the European Geosciences Union.

Abstract

Sea level is one of the 50 Essential Climate Variables (ECVs) listed by the Global Climate Observing System (GCOS) in climate change monitoring. In the last two decades, sea level has been routinely measured from space using satellite altimetry techniques.

5 In order to address a number of important scientific questions such as: “Is sea level rise accelerating?”, “Can we close the sea level budget?”, “What are the causes of the regional and interannual variability?”, “Can we already detect the anthropogenic forcing signature and separate it from the internal/natural climate variability?”, and “What are the coastal impacts of sea level rise?”, the accuracy of altimetry-based sea level

10 records at global and regional scales needs to be significantly improved. For example, the global mean and regional sea level trend uncertainty should become better than 0.3 and 0.5 mm year⁻¹, respectively (currently of 0.6 and 1–2 mm year⁻¹). Similarly, interannual global mean sea level variations (currently uncertain to 2–3 mm) need to be monitored with better accuracy. In this paper, we present various respective data

15 improvements achieved within the European Space Agency (ESA) Climate Change Initiative (ESA CCI) project on “Sea Level” during its first phase (2010–2013), using multi-mission satellite altimetry data over the 1993–2010 time span. In a first step, using a new processing system with dedicated algorithms and adapted data processing strategies, an improved set of sea level products has been produced. The main

20 improvements include: reduction of orbit errors and wet/dry atmospheric correction errors, reduction of instrumental drifts and bias, inter-calibration biases, intercalibration between missions and combination of the different sea level data sets, and an improvement of the reference mean sea surface. We also present preliminary independent validations of the SL_cci products, based on tide gauges comparison and sea level budget closure approach, as well as comparisons with ocean re-analyses and climate model

25 outputs.

2031

1 Introduction

Global warming in response to the anthropogenic green-house gases emissions has already shown several visible consequences, among them the increase of the Earth’s mean air temperature and ocean heat content, melting of glaciers, and loss of ice

5 masses from glaciers and the Greenland and Antarctica ice sheets. Ocean warming and land ice melting in turn are causing sea level to rise, with potentially negative impacts in many low-lying regions of the world. The precise measurement of sea level changes as well as its different components, at global and regional scales, is an important issue for a number of reasons. It provides information on how the climate system

10 and its different components respond to global warming and on the relative contributions of anthropogenic forcing and natural/internal climate variability. This also allows validating the climate models developed for projecting future changes as the models are supposed to correctly reproduce present-day and recent-past changes. The Global Climate Observing System (GCOS) has recently defined a set of 50 climate variables

15 (called Essential Climate Variables – ECVs) that need to be precisely monitored on the long-term in order to improve our understanding of the climate system, its functioning and its response to anthropogenic forcing, as well as to provide constraints for climate modelling (GCOS, 2011). In 2010, the European Space Agency (ESA) developed a new program, the Climate Change Initiative (CCI), dedicated to reprocessing a set of

20 13 ECVs currently observed from space; among them, the satellite altimetry-based sea level ECV. The objective of the CCI sea level project (called SL_cci below) was to produce a consistent and precise sea level record covering the last two decades, based on the reprocessing of all satellite altimetry data available from all missions (including the ERS-1&2 and Envisat missions, in addition to the TOPEX/Poseidon, Jason-1&2 and Geosat Follow-on (GFO) missions). During the 1st phase of the project, that lasted

25 3 years from 2011 to 2013, satellite altimetry data from 7 altimeter satellites have been reprocessed by the SL_cci consortium. Improved satellite orbits have been computed using up-to-date force models and an improved reference frame realization. Updated

2032

geophysical corrections adapted to each satellite mission have been implemented after being evaluated and selected. Other improvements concern the reduction of instrumental drifts and biases (in particular for the Envisat mission), a new calculation of the mean sea surface used as reference, the method used for geographical averaging of sea surface height data and the reduction of systematic bias between missions. The main SL_cci products computed during the phase 1 consist of: (1) a Global Mean Sea Level (GMSL) time series at monthly interval between January 1993 and December 2010, and (2) a global gridded sea level time series (resolution $0.25^\circ \times 0.25^\circ$) at the same time interval.

This paper thus intends to provide a global overview of the main results obtained in the frame of the SL_cci project. We firstly describe the validation protocol (Sect. 2) that has been applied to evaluate and select the algorithms and corrections used (Sect. 3) to generate the SL_cci products (described in Sect. 4). Then, Sect. 5 and 6 are focused on the assessment and the error characterization.

2 Definition of a formal validation protocol of validation

The altimetry data processing system used to compute sea level (or the Sea Surface Height/SSH) integrates a number of components: the altimeter range measurement (Range), the satellite orbit height (Orbit) and the instrumental and geophysical corrections. The estimation of these components needs additional information coming from different domains as orbitography (a force model) for the precise orbit determination, geodesy (geoid, mean sea surface, global isostatic adjustment (GIA), etc.), atmosphere (pressure, wind, dry and wet troposphere, etc.), and ocean (ocean tides, sea state, etc.). This information may be eventually linked together either directly or indirectly. Because of these complex interactions, sea level estimates (i.e.,

SSH = Orbit Range $\sum_{i=0}^N$ Correction_{*i*}) are provided with different standards. In practice,

2033

an optimized sea level calculation requires a large number of algorithms and corrections that need to be rigorously validated and regularly updated.

In the framework of the SL_cci project, we developed a new formal validation protocol which allowed us to evaluate the impact of new altimeter corrections or standards on a sea level record of climate quality, i.e., precise enough for climate studies. It consists in comparing the new altimeter corrections with corrections designed as a reference through their impact on the sea level calculation. This was done using a common set of validation diagnoses defined in such a way that they fulfil the sea level accuracy and precision requirements. The validation diagnoses are distributed into 3 distinct families allowing the assessment of altimetry data with complementary objectives:

1. the “global internal analyses” with the aim of checking the internal consistency of a specific mission related-altimetry system by analyzing the computed sea level, its instrumental parameters (from altimeter and radiometer) and associated geophysical corrections,
2. the “global multi-mission comparisons” allowing evaluation of the coherence between two different altimetry systems through comparison of SSH data,
3. the “altimetry-in-situ data comparison” dedicated to the computation of the sea level differences between altimeter data and in-situ sea level measurements; e.g., from tide gauges or Argo-based steric sea level data (Valladeau et al., 2012); this 3rd approach allows for the detection of potential drifts or jumps in the long-term sea level time series.

For each family, several validation diagnoses have been defined using elementary statistical approaches (e.g., mean, standard deviation, linear regression) and data representation (e.g., global mean time series, maps, histograms, periodograms, etc.). Other tests based on altimeter correction differences, sea surface height differences at satellite track crossovers, sea level anomalies, etc. were also performed. The list of all the diagnoses and their specification is described in detail in the Product Validation

2034

Plan (PVP) report of the SL_cci project (see appendix for all referenced SL_cci reports available on the SL_cci website).

The analyses of these diagnoses were performed for different spatial (global mean and regional sea level, mesoscale) and temporal scales (Table 1, left panel): long term
 5 > 10 years, interannual 2–5 years, and periodic signals-annual, semi-annual scales. These spatio-temporal scales were chosen according to the sea level user requirements document (SL_cci User Requirements Document, 2010) presented in the last section. This formal validation protocol allows us to determine, for each spatial and temporal
 10 scale, the level of impact (i.e. low or strong) of the new altimetry corrections on the sea level calculation (Table 1, right panel). For instance, if a new altimetry correction causes a GMSL trend $> 0.15 \text{ mm year}^{-1}$ (over a period > 10 years), we consider that the impact is strong, whereas if the trend effect is in the range $0.05\text{--}0.15 \text{ mm year}^{-1}$, it is assumed low, and negligible below $0.05 \text{ mm year}^{-1}$.

Our goal is also to check whether the new altimeter corrections improved or degraded
 15 the sea level estimates for each time scale. In general, it was possible to clearly detect either improvement or degradation (illustrated Table 1, left panel, with the symbols “+” or “–” meaning improvement or degradation). For example, increased consistency between GMSL trends derived from two different altimetry missions or from in-situ measurements suggests that the accuracy/precision of sea level data has been improved.
 20 In only a few cases, the diagnoses were inconclusive. This occurred when errors of altimetry missions are of the same order of magnitude or correlated (e.g. same error for the regional mean sea level trends). In these rare cases, thorough investigations could be conducted through a “case by case” approach. When no obvious conclusion could be reached, the sea level differences due to the new correction were then allocated to
 25 the altimetry error budget (see Sect. 6).

Thanks to this formal validation protocol, the impact of all altimeter corrections could be described through a homogeneous approach and is therefore comparable between each other. The table presented in Fig. 1 (left panel) allows us to provide easily and

2035

quickly relevant information about the impact of each correction on the sea level products.

3 Development, validation and selection of new altimeter corrections and algorithms

5 In this section, we present applications of the formal validation protocol described in Sect. 2. An important output of the SL_cci project was the development of new altimetry corrections (mentioned in Sect. 2) and algorithms (e.g. for merging data from different altimetry missions). A total of 42 new corrections/algorithms were evaluated within the project using the validation protocol described above. The reference standards were
 10 those used for AVISO products (Dibarboure et al., 2011) at the beginning of the SL_cci project.

Table 1 presents the selected corrections for each component and altimetry missions (for detailed information, see “SL_cci Validation Report, Executive Summary”, 2013).

15 One of the most dramatic improvements comes from the use of ERA-interim reanalyses (from the European Centre for Medium-Range Weather Forecasts (ECMWF); Dee et al., 2011) instead of operational ECMWF fields to calculate the dry tropospheric and other dynamical atmospheric corrections. Applying our validation protocol, we noted strong improvements at mesoscale and regional spatial scales, over the first altimetry decade (1993–2003) (Carrere et al., 2014; “SL_cci Validation reports, Atmospheric corrections”).
 20 The GMSL error reduction (Table 2, top) obtained from crossover analyses is of the order of 2.5 cm on the early years of altimetry era (1993–1995). Then, the error decreases linearly until 2004, and remains stable close to 0, during recent years. The improvement observed in the first decade (1993–2003) is stronger at high latitudes (6 cm) where the atmospheric pressure and wind fields have strong high frequency
 25 variability. Looking at regional sea level trends (Table 2), significant trend differences are observed ($> 1 \text{ mm year}^{-1}$) mainly in the South Pacific Ocean below 50° S latitude.

2036

Similarly, the model-based wet tropospheric correction was also strongly improved (until 1 cm error reduction on the GMSL) before 2002 using ERA-interim instead of ECMWF operational fields (Legeais et al., 2014). While not as good as the wet troposphere corrections derived from the on-board microwave radiometers (MWR), the ERA-Interim wet tropospheric correction allows us to better characterise the uncertainty of wet troposphere content over the long term (Thao et al., 2014; Legeais et al., 2014). However, this was not used in the sea level calculation where the radiometer-based corrections were preferred.

In parallel, the radiometer-based corrections have been improved using combined estimates from valid on-board MWR values, Global Navigation Satellite Systems (GNSS) measurements and ECMWF model (ERA Interim fields) in areas where the MWR measurements are degraded due to, e.g., land or ice contamination or instrument malfunction (Fernandes et al., 2010, 2014). This new correction, called GNSS-derived Path Delay (GPD), computed for all ESA and reference missions, brings improvements mainly in coastal areas and in the polar regions. In Fig. 3, the sea level error reduction is plotted vs. the distance to the coast using the new GPD corrections instead of the reference radiometer-based corrections. For almost all missions, except Jason-2 which already benefits from an improved coastal radiometer correction (Brown et al., 2009), there is a significant SSH error reduction, close to 1 cm between 20 and 40–50 km from the coast. Improvements have also been noticed in the open ocean, especially for TOPEX data (Fernandes et al., 2014) where radiometer data gaps degrade the interpolation process. Finally, the GPD corrections have been selected for all altimeter missions because of the noted improvement in the sea level calculation at short and long time scales, mainly in coastal and polar regions.

Orbit error is the main source of the error for the long-term sea level evolution at oceanic basin scales (Couhert et al., 2014). Strong efforts have been made within the SL_cci project to develop new orbit solutions (Rudenko et al., 2014) and to compare them with external solutions provided by other projects. The International Terrestrial Reference Frame (ITRF) realisation (Altamimi, 2011) and the Earth gravity field

2037

model used in the orbit computation are crucial as far as the quality of orbit solutions is concerned. After analyzing all orbit solutions for all the missions, the REAPER combined orbit solutions (Rudenko et al., 2012) have been selected for ERS-1 and ERS-2, with the new CNES GDR-D orbit solutions (Couhert et al., 2014) being selected for the Jason-1, Jason-2 and Envisat missions. Strong effects were observed on the regional sea level trend, in the range of $1\text{--}2\text{ mm year}^{-1}$, with large patterns at hemispheric scale when using static and time variable Earth gravity field models for orbit computation (Fig. 4). Thanks to cross-comparisons between altimetry missions (Ollivier et al., 2012) and with in-situ measurements (Valladeau et al., 2012), we have demonstrated that these new orbit solutions dramatically improved the regional sea level trends. Furthermore, this inter-comparison, using different orbit solutions, provided interesting information on the orbit sensitivity to the choice of the Earth gravity field model (Rudenko et al., 2014).

In addition to these major improvements, other corrections were also selected, although their impact on the sea level estimate was lower. These concern the ionospheric correction with the use of the NIC09 (New Ionosphere Climatology) model for ERS-1 (Scharroo et al., 2010), the GOT4.8 (Geocentric Ocean Tide) ocean tide solution (Ray et al., 2013) and the DTU10 (Danish Technical University) mean sea surface (Andersen et al., 2010) for all missions. In addition, we also benefited from the reprocessing of Envisat and Jason-2 level-2 products “GDR V2.1” (Ollivier et al., 2012) and “GDR-D” (Philipps et al., 2013). This allowed us to increase the data coverage (mainly for Envisat) and to improve the sea-state bias corrections along with instrumental bias and drift corrections. For the latter, the impact is strong for Envisat since a global instrumental drift of about 2 mm year^{-1} was identified and corrected in the altimeter range (Thibaut et al., 2010; Roca and Thibaut, 2009; Garcia and Roca, 2010). It is worth mentioning that the SL_cci project contributed to correct this anomaly, while Envisat was not designed for climate studies but rather mesoscale variability.

The last new algorithm developed and selected aims at better combining the different sea level time series from TOPEX, Jason-1 and Jason-2 at regional scale. Thanks to

2038

the verification phase between these missions, systematic geographical biases could be detected. These biases are mainly latitude-dependent, with variations close to 0.5 cm between Jason-1 and Jason-2, and 1 cm between TOPEX and Jason-1. Correcting these regional and systematic sea level differences (see the SL_cci Validation Report, Regional SSH bias corrections between altimetry missions, 2012), led us to better combine together these 3 altimetry missions and therefore better estimate the long-term sea level evolution at regional scales. The impact of these corrections on regional MSL trends plotted in Fig. 5 from 1993 to 2010 is close to $\pm 0.3 \text{ mm year}^{-1}$, with large hemispheric dependence.

4 New CCI-based sea level records

Sea level products were generated using the new altimeter corrections described in Sect. 3. The same procedure was adopted as for the SSALTO DUACS (Segment Sol Multimission Altimetrie et Orbitographie, Data Unification and Altimeter Combination System) system (Dibarboure et al., 2011). After calculating the along-track sea level for each of the 7 missions (TOPEX/Poseidon, Jason-1, Jason-2, ERS-1, ERS-2, Envisat and Geosat Follow-on) over the [1993, 2010] period, the main steps consisted of: combining all missions together, reducing the orbit and the long wavelength errors, computing the gridded sea level anomalies using an objective analysis approach (Ducet et al., 2000; Le Traon et al., 2003), and generating mean sea level products (e.g., GMSL time series, gridded sea level time series, etc.) dedicated for climate studies. The SL_cci products are monthly grids time series with a spatial resolution of 0.25° degrees using a rectangular projection. The GMSL time series (also at monthly interval) is based on the geographical averaging over the oceanic domain observed by the altimetry data (82° S to 82° N) of the gridded data. Additional products (called indicators) are provided, e.g., GMSL trend, regional MSL trends, amplitudes and phases of the main periodic signals (annual, semi-annual), etc.

2039

Access to the SL_cci products can be obtained by sending an email at the following address: info-sealevel@esa-sealevel-cci.org. The Product User Guide (PUG, 2013) and Product Specification Document (PSD, 2013) provide further details.

Comparisons between the SL_cci product and the AVISO-2010 products (Dibarboure et al., 2011) were performed by applying the formal validation protocol described above (Sect. 2). Concerning the GMSL trend, similar values were obtained for both time series: 3.2 mm year^{-1} over the 1993–2010 time span. At the interannual time scale, (highlighted by calculating the difference between the two GMSL time series (Fig. 6, top panel), small differences in the range 1–2 mm or lower are noticed, except for 1994 where a 4 mm jump is observed. This jump is due to an anomalous value of the AVISO-2010 products caused by an inadequate merging of the TOPEX data with the ERS-1 data of the non-repetitive geodetic phase (Pujol et al., 2014). The most impressive result is obtained by separating the ERS-1/ERS-2/Envisat and TOPEX/Jason-1/Jason-2 global GMSL time series using alternately the old and new altimeter corrections (Fig. 7): the trend difference between both time series is now close to 0.6 mm year^{-1} from 1993 to 2010 instead of about 1.5 mm year^{-1} previously. This improved consistency does not have a direct impact on the GMSL trend, which only depends on the TOPEX/Jason-1/Jason-2 missions. However, this provides increased confidence in the long-term GMSL time series.

Looking at the regional sea level trend differences (Fig. 6, bottom panel), large geographically correlated structures are observed. Their amplitude is in the $\pm 2 \text{ mm year}^{-1}$ range. They primarily result from the new orbit solutions (hemispheric effects), the new ERA-interim atmospheric fields (at high latitudes), the new wet tropospheric correction, and the geographical biases arising when linking altimetry missions together. Comparing with in-situ measurements (tide gauges and Argo-based steric sea level) indicates a better consistency at the regional scale with the new SL_cci data (see SL_cci Product Validation Internal Report – PVIR, 2013). It is more difficult to detect any improvement at short spatial scales, because either the spatial or temporal sampling of in-situ measurements is not good enough or because the error generated by the collocation

2040

method between the in-situ and altimetry data is larger than the target signal (Couhert et al., 2014). We also examined the periodic (annual and semi-annual) sea level signals. We found differences in the order of 5 mm on average for the amplitude of the annual signal. In some regions (the tropics), the differences can reach 1 cm. Whilst we think that the new seasonal signal is improved compared to the AVISO-2010 products, it is not possible to demonstrate this through any independent validation diagnoses. Indeed, comparisons with the in-situ measurements are not accurate enough to observe such signals.

5 Validation of the temporal and spatial variations of global sea level:

The SL_cci products delivered at the end of Phase 1 are currently under validation and evaluation. Two different approaches have been developed:

1. Assessment of the accuracy of the SL_cci products through their use in ocean reanalyses and Earth system models
2. Assessment of the global sea level budget

In approach (1), the accuracy of the SL_cci data is evaluated by quantifying the model performances and robustness (compared to the use of using a reference sea level data set, e.g., AVISO standard data) in representing a number of physical processes (e.g., the sea level drop associated with the 2011 La Niña, the Indonesian through flow, changes in the Arctic circulation, effects of monsoon on sea level, regional sea level fingerprint due to wind stress, steric sea level trend patterns, etc.).

Approach (2) consists of comparing the SL_cci GMSL and variability to (i) other GMSL, and (ii) the sum of the climatic and non-climatic components estimated independently (changes in thermal expansion, glacier and ice sheet mass balance and land water storage).

2041

5.1 Assessment based on numerical ocean models

Ocean model simulations are an effective way of translating wind and heat fluxes information into sea level variations, thus providing independent verification of their contribution to sea level. Sea level from ocean-only simulations at different resolutions (1° degree, 1/4° of degree) has been contrasted with along-track data and with gridded (filtered and merged) sea level maps from AVISO (Dibarboure et al., 2011) and SL_cci. The statistics of the comparison (correlation, rms error, differences in trends) were similar when using AVISO and SL_cci data. Differences between models and any observed estimations were much larger than the differences between observational products. The spatial patterns of these differences were suggestive of model error. For instance, small scale sea level variability is much larger in observed products than in models, which is consistent with insufficient resolution in the models. In contrast the low frequency and large scale variability is more obvious better resolved in models. The large scale patterns of interannual variability and trends are consistent between models and observations, but differences exist associated with the precise location of strong current systems, which models struggle to capture. This information is in itself interesting, and suggests that a large part of the sea level variability is of dynamic nature, associated with changes in the wind-driven circulation. Both AVISO and SL_cci were useful to detect improvements in ocean model simulations due to the increased resolution.

In the Arctic Ocean the SL_cci reprocessed data reveals some distinct features of the elevated trend in sea level rise, notably: in the Beaufort Sea, in the Norwegian Sea, in the Sub-Polar gyre, and in the North East Atlantic south of the Iceland-Faroe ridge. The Beaufort Sea rise of about 6.5–7 mm year⁻¹ has also been reported by Morison et al. (2011) and Laxon et al. (2012), while the elevated feature of around 6–7 mm year⁻¹, as detected in the SL_cci field in the Lofoten Basin of the Norwegian Sea, compares rather well with the trend recovered from in-situ hydrographic observations.

2042

A first look at the three GCMs (General Circulation Model), NorESM (Norwegian Earth System Model), Hadley and IPSL (Institut Pierre-Simon Laplace), reveals large individual differences in the trend of sea level change, both regarding the overall trend as well as in its regional characteristic changes. In comparison to the SL_cci sea level change the NorESM simulations (1° resolution) yield the best agreement both in the Sub-Polar gyre, in the northeast Atlantic Ocean south of the Iceland-Faroe ridge, in the Lofoten basin of the Norwegian Sea and in the Beaufort Gyre. This intercomparison of the SL_cci trends with the trends derived from the three GCMs is interesting and can provide evidence for how realistic the model simulations are with respect to the variability of the water masses (steric height contribution) and variability, spreading and accumulation of freshwater discharges from melting ice sheets and glaciers (mass changes).

In summary, as it was to be expected from the beginning, even ocean-only simulations are not able to identify the incremental improvement of SL_cci vs. its predecessor. Nevertheless, this validation exercise has shown that the SL_cci is a robust dataset for ocean and climate models validation, and can discern verification metrics.

5.2 Assessment based on ocean data assimilation

Data assimilation methods can be very effective methods to test the quality of the input data. This approach was used here to evaluate the SL_cci products, either by direct assimilation of the product (active mode) or by simple comparison with a reference state (passive mode), obtained by a forced ocean-model combined with in-situ observations, and even other sea level observations. In this way, the reference state, containing information both from model (winds) and in-situ observations, should have less error than an ocean-model simulation. The passive comparison can be done a-posteriori (by comparing and ocean reanalyses with SL_cci), or during the assimilation process, by contrasting, at the appropriate location and time, the along track altimeter altimetry data with the estimate given by an ocean model that assimilates in-situ temperature and salinity.

2043

In a first step, sea surface height fields available from the GECCO2 assimilation approach (Köhl, 2014) were compared with AVISO products as well as to the SL_cci product, respectively. Of these two, the AVISO product was used to constrain the model, but not the SL_cci product. The comparison was performed to investigate whether the new SL_cci product is closer to the GECCO2 ocean reanalysis product, constrained by most of the available global data sets, than the previous AVISO data set, a test that would highlight a better consistency of the new SSH data with ocean dynamics and other ECV information. The comparisons have been performed separately for the ERS (ERS-1, ERS-2 and ENVISAT) and the TOPEX/Poseidon satellite-series (TOPEX/POSEIDON, Jason-1 and Jason-2). Figure 8 shows the ratio (RMS_AVISO/RMS_SL_cci) of the RMS differences between the GECCO model and the satellite time series of ERS-1, ERS-2 and ENVISAT for AVISO (RMS_AVISO) and SL_cci (RMS_SL_cci) in percent improvement at model resolution. Red indicates improvements of the SL_cci compared to the AVISO data set and blue degradation. Remarkable are the improvements in the north Atlantic, in the Indian Ocean through flow and in many parts of the ocean. The regions where SL_cci shows less skill compared to AVISO are the ones where the GECCO2 solution has adapted very well to AVISO and at the same time where the STD of the datasets are very small, indicating a small signal to noise ratio in these regions. Therefore, the model might have adapted to the not as good AVISO data and thus gives less skill in comparison to the improved SL_cci dataset. From the analysis of the model grid, we found that the SL_cci has been improved in many regions.

Both AVISO and SL_cci sea levels have also been compared with the sea level from the ORAS4 ocean reanalyses (Balmaseda et al., 2013), which assimilate in situ temperature, salinity and AVISO data along track altimeter. Time series of standard area-averaged climate indices have been used to gain insight on the differences between the AVISO and SL_cci products. Figure 9 shows a time series of the 12 month running mean sea level anomaly differences (respect AVISO for SL_cci (red) and ORAS4 (blue)). In the Eastern Pacific (5° N–5° S, 130–90° W left panel) both ORAS4 and SL_cci show a positive offset with respect to AVISO data after 2005 (from 2005 onwards the

2044

ocean state in ORAS4 is relatively well constrained by Argo). In addition, SL_cci and ORAS4 data consistently show stronger local maxima associated with El Niño 1997. The precursor of this El Niño is visible in the Western Pacific slightly earlier, and it is also more pronounced in SL_cci and ORAS4 than in AVISO (not shown). The right panel of Fig. 9 shows the equivalent time series for the Southern Indian Ocean (30–7° S, 20–150° E), where both ORAS4 and SL_cci consistently show a negative tendency with respect to AVISO, suggesting that AVISO overestimates the sea level rise in this area. The differences in trends between SL_cci and AVISO shown in these time series are similar to those shown in Fig. 6 (bottom). The variability of the ORAS4 reanalysis agrees better with the SL_cci product than with AVISO.

5.3 Comparison of the SL_cci GMSL time series with other GMSL products

We constructed a GMSL time series by geographically averaging the SL_cci gridded data between 66° S and 66° N. A simple cosine of latitude weighting was applied to the data. As no glacial isostatic adjustment (GIA) correction was applied to the gridded data, we added the usual $+0.3 \text{ mm year}^{-1}$ GIA trend from the SL_cci GMSL (as usually done by other processing groups). We further compared the SL_cci GMSL with altimetry-based GMSL time series computed by different processing groups: (AVISO, University of Colorado (CU), NOAA (National Oceanic and Atmospheric Administration), GSFC (Goddard Space Flight Center) and CSIRO (Australia's Commonwealth Scientific and Industrial Research Organisation). The results are shown in Fig. 10 (left panel). In terms of trends, all curves are very really similar to each other and trend differences ($< 0.2 \text{ mm year}^{-1}$) are fully covered by the formal error on the trend computation. However, it is interesting to note that all sea level curves differ significantly (by several mm) over an interannual time scale. This is illustrated in Fig. 10 (right panel). This is particularly noticeable during the TOPEX/Poseidon period (1993–2001), with a significant big departure of the CSIRO GMSL from other curves. The detrended SL_cci GMSL is in general close to the AVISO GMSL, although slight differences are noticed at the end of the study period.

2045

5.4 Comparison of the SL_cci GMSL with steric and ocean mass components (sea level closure budget); interannual time scale

GMSL change is a combination of ocean mass and steric (thermal expansion) changes. We compared the GMSL computed from the SL_cci gridded product with the sum of steric and mass components over the Argo and GRACE (Gravity Recovery and Climate Experiment) operating period (since ~ 2005). Argo-based steric data used for this comparison is based on that processed by Karina von Schuckmann (von Schuckmann and Le Traon, 2011). Ocean mass has been estimated using the RL05 data from the GRACE project (Chambers et al., 2012). The GRACE and steric data have been averaged over the 66° S and 66° N domain. Figure 11 compares three GMSL products (AVISO, CU and SL_cci) with the sum of steric and mass contributions over 2005–2010. The mean trend over the study period (2005–2010) has been removed. The three GMSLs present similar variations and show reasonably good agreement with the sum of the components. Although small differences exist, the best agreement is found for the SL_cci GMSL. Correlation coefficients between the sum “steric plus mass” component and GMSL time series have also been computed. The highest correlation (of 0.65) is found with the SL_cci GMSL.

The results presented above are first attempts to validate the SL_cci products. We find some differences both in terms of global mean and regional variability with the standard products. Preliminary comparisons with the sum of the climate contributions (the sea level budget closure budget approach) suggest that the CCI product fits better the sum of the climatic components. But further work is needed on that particular topic, using different steric and ocean mass products with assessed uncertainties. For instance, the steric height from ocean reanalyses can also be used for global sea level budget closure (Balmaseda et al., 2013). This will be a topic for the CCI phase 2 activities.

5.5 Gridded products: comparison with steric sea level trends

The gridded product is provided with the same spatial resolution as the usual AVISO product but with a different temporal resolution (1 month instead of 1 week). To assess the quality of the SL_cci product, we compared it with the steric contribution based on different data sets.

It is now well known that steric effects (thermal expansion and salinity effects) are the dominant cause of regional variability in sea level rates. Therefore, we compared the CCI regional trends with steric trends. Ishii and Kimoto (2009) provided us with an updated set of temperature and salinity profiles, optimally interpolated on a $1^\circ \times 1^\circ$ regular grid (the most updated version 6.13 was used; called IK13 hereafter). We computed steric sea level grids from 1945 to 2012, at monthly intervals. Figure 12 compares the CCI sea level trends with the IK13 steric trends over 1993–2010. Both maps show similar trend patterns, but these are smoother in the steric map than in observed sea level. The correlation map has also been computed. Although correlation coefficients are positive and greater than 0.5, the greatest values were found in the Tropics, in particular in the Pacific Ocean. We can note also low, and sometimes negative, correlation coefficients in high latitudes of the Southern Hemisphere.

6 Error budget of sea level

Although improvements were made, the SL_cci products still contain remaining errors at different time scales. In order to inform users about these errors, we have established an error budget dedicated to the main spatio-temporal scales (i.e., global and regional, long-term – 5–10 years or more –, interannual – < 5 years – and seasonal, see Table 2). For each of these, an error was determined and compared to the sea level Climate User requirements (GCOS, 2011) which have been updated in the framework of the Sea Level CCI project (Sea Level CCI User Requirement Document -URD-, 2013).

2047

Regarding the GMSL trend, an uncertainty of 0.5 mm year^{-1} was estimated over the whole altimetry era (1993–2010). This uncertainty is reduced by 0.1 mm year^{-1} compared to the previous data based on AVISO-2010 standards over 1993–2008 (Ablain et al., 2009). While small, this reduction is mainly due a 2 year longer record as well as to the homogenization of the altimetry corrections between all the missions. The main source of the error remains the radiometer wet tropospheric correction with a drift uncertainty in the range of $0.2\text{--}0.3 \text{ mm year}^{-1}$ (Legeais et al., 2014). To a lesser extent, the orbit error (Couchert et al., 2014) and the altimeter parameters (range, sigma-SWH) instabilities (Ablain et al., 2012) also add additional uncertainty, of the order of 0.1 mm year^{-1} . Notice that for these two corrections, the uncertainties are higher in the first altimetry decade (1993–2002) where TOPEX/Poseidon, ERS-1 and ERS-2 measurements display stronger errors (Ablain et al., 2013). Furthermore, imperfect links between TOPEX-A and TOPEX-B (February 1999), TOPEX-B and Jason-1 (April 2003), Jason-1 and Jason-2 (October 2008) lead to the errors of 2 mm, 1 mm and 0.5 mm respectively (Ablain et al., 2009). They cause a GMSL trend error of about $0.15 \text{ mm year}^{-1}$ over the 1993–2010 period. Although the SL_cci project work has led to significant improvements, the remaining uncertainty of 0.5 mm year^{-1} on the GMSL trend remains 0.2 mm year^{-1} higher than the GCOS requirements (of 0.3 mm year^{-1} , see GCOS, 2011).

All sources of errors described above have also had an impact at the interannual time scale (< 5 years). Recent studies (Henry et al., 2013) have also shown that the methodology applied to calculate sea level is particularly sensitive for the interannual scales (Henry et al., 2014). We estimated that the methodology uncertainty is on average $\sim 2 \text{ mm}$ over a 1 year period. Although improvements have been made, this level of error is still 1.5 mm higher than the GCOS requirement of (0.5 mm). This may have consequences on the sea level closure budget studies at the interannual time scale. For the annual signal, the amplitude error was estimated to be < 1 mm. Knowing that the annual amplitude of the GMSL is of the order of 9 mm, we can consider this

2048

error is low. Notice that no requirement has yet been defined by GCOS for the periodic signals (at global and regional scales).

At the regional scale, the regional trend uncertainty is of the order of $2\text{--}3\text{ mm year}^{-1}$. Although the orbit error has been significantly reduced for this spatial scale, it remains the main source of the error (in the range of $1\text{--}2\text{ mm year}^{-1}$; Couhert et al., 2014) with large spatial patterns at hemispheric scale. The Earth gravity field model errors explain an important part of these uncertainties (Rudenko et al., 2014). Furthermore, errors are higher in first decade (1993–2002) where the Earth gravity field models are less accurate due to the unavailability of the Gravity Recovery and Climate Experiment (GRACE) data before 2002. Additional errors are still observed, e.g., for the radiometer-based wet tropospheric correction in tropical areas, other atmospheric corrections in high latitudes, and high frequency corrections in coastal areas. The combined errors give rise to an uncertainty of $0.5\text{--}1.5\text{ mm year}^{-1}$. Finally, the $2\text{--}3\text{ mm year}^{-1}$ uncertainty on regional sea level trends remains a significant error compared to the 1 mm year^{-1} GCOS requirement, even if this project has led to a 0.5 to 1.5 mm year^{-1} reduction (Fig. 6).

7 Conclusions and perspectives

Several groups (AVISO, University of Colorado, CSIRO, JPL (Jet Propulsion Laboratory), etc.) are currently processing satellite altimetry data to provide sea level products to user for climate applications. Within the SL_cci project, we have continued to improve the multi-mission sea level products over the altimetry era (1993–2010) through the development and computation of new corrections listed in Table 1. As far as possible, we have homogenized these corrections between all the missions in order to reduce the sources of discrepancies. Thanks to our formal validation protocol, we have been able to select the best corrections and algorithms applied in the sea level calculation. We have produced new sea level products and additional indicators over the 1993–2010 period. The SL_cci products exhibit substantial improvements, of great value for climate

2049

studies. The most important improvement is obtained for the regional sea level trends, with an error reduction of $0.5\text{--}1.5\text{ mm year}^{-1}$ with large correlated spatial patterns. In parallel, the uncertainties of altimetry sea level have been better characterized and the sea level user requirements refined for climate applications.

The validation exercise has demonstrated that the existence of an additional good quality sea level record has value in itself. Firstly, it clearly shows that the AVISO and SL_cci altimeter-derived sea level gridded products are robust (small uncertainty compared with the model error), and able to identify model improvements. Therefore they are a suitable data set to define metrics in the validation of ocean and climate models. SL_cci can be treated as an independent data set for verification. It has been used in the recent inter-comparison of ocean reanalyses ORAIP (Balmaseda et al., 2014; Hernandez et al., 2014). Preliminary results show that the SL_cci is closer to the ensemble mean of ocean reanalyses (a robust estimator) than its predecessor AVISO, and suggest that some ocean reanalyses that assimilate AVISO may over-fit the altimeter data. Model outputs using ocean assimilation techniques also provide independent sea level estimations that can be used to validate the SL_cci. Results obtained in the frame of the SL_cci project show that the low frequency variability and trends of SL_cci agree better with ocean data assimilation estimators than with AVISO, especially in the Southern Ocean, the Eastern Pacific and coastal areas.

However, while a lot of improvements have been made, the user requirements are not yet reached. Remaining uncertainties are still 0.2 mm year^{-1} and $1\text{--}2\text{ mm year}^{-1}$ higher than the GCOS requirements for the GMSL trend and regional trends respectively. Similarly, the sea level error over a 1 year period is about 2 mm on average instead of the required 0.5 mm. Therefore it is still necessary to continue to improve the sea-level time series. Several ways of improvements have already been identified and will be implemented during phase 2 of SL_cci project (January 2014 to December 2016).

For example, we plan to extend the sea level time series beyond 2010 using the same sea-level corrections. By the end of year 2014, the current CCI_SL release will be extended until 2013 (included). And each subsequent year, we will extend the time

series by 1 year. Additional improvements will be implemented; in particular, new orbit solutions, use of new atmospheric reanalyses based on ERA-Clim project (Dee et al., 2014), new ocean tides, new radiometer-based wet troposphere corrections with improved long-term stability, etc. Furthermore, several level-2 altimetry data reprocessing activities are already planned by space agencies (CNES, NASA, ESA) for Jason-1, TOPEX/Poseidon, Envisat and ERS missions, allowing us to benefit from homogenized data both for instrumental parameters and geophysical corrections. In addition, we intend to account for new altimeter missions already in orbit (CryoSat-2, SARAL/Altika) or to be launched in the near future (Jason-3, Sentinel-3). They are all relevant to extend the sea level time series with the same level of accuracy, and to improve coastal and high latitude areas which are of great interest for climate studies. Dedicated analyses will be performed in the Arctic region in order to improve sea level estimates nearby or under sea ice where no data is currently available. In parallel, we will continue to refine the user requirements, further developing the link with users and space agencies. This will include a quantification of the requirements for accuracy and long-term stability for climate-quality observations of sea level in the coastal zone, a key area for climate change. We also would like to refine the budget error with the new measurements and the new corrections. Lastly and with the idea to continuously answer to the user needs, we will produce by the end of 2016, a new improved sea level time series covering the 1993–2015 period.

Acknowledgements. This work was performed in the framework of the ESA CCI program supported by ESA. It was also made possible thanks to the support of CNES for several years in altimetry data processing, in particular, thanks to the use of SSALTO/DUACS system developed in the framework of the SALP project (Service d'Altimétrie et de Localisation Précise). We would also like to thank all contributors to this project who have participated actively to the SL_cci project, with special recognition to S. Dinardo and B. M. Lucas in support of ESA, for their diligent reviewing of all the documents and datasets produced by the SL_cci team.

References

- Ablain, M., Cazenave, A., Valladeau, G., and Guinehut, S.: A new assessment of the error budget of global mean sea level rate estimated by satellite altimetry over 1993–2008, *Ocean Sci.*, 5, 193–201, doi:10.5194/os-5-193-2009, 2009.
- Ablain, M., Philipps, S., Urvoy, M., Tran, N., and Picot, N.: Detection of long-term instabilities on altimeter backscattering coefficient thanks to wind speed data comparisons from altimeters and models, *Mar. Geod.*, 35, 42–60, doi:10.1080/01490419.2012.718675, 2012.
- Ablain, M., Ollivier, A., Philipps, S., and Picot, N.: Why Altimetry Errors at Climate Scales Are Larger in the First Decade (1993–2002)?, OSTST Boulders, October 2013, available at: http://www.aviso.altimetry.fr/fileadmin/documents/OSTST/2013/posters/Ablain_AltimetryErrorAtClimateScales.pdf (last access: 20 June 2014), 2013.
- Altamimi, Z., Collilieux, X., and Métivier, L.: ITRF2008: an improved solution of the International Terrestrial Reference Frame, *J. Geodesy*, 85, 457–473, doi:10.1007/s00190-011-0444-4, 2011.
- Andersen, O. B.: The DTU10 Gravity field and Mean sea surface (2010), Second International Symposium of the Gravity Field of the Earth (IGFS2), 20–22 September 2010, Fairbanks, Alaska, available at: http://www.space.dtu.dk/english/~media/Institutter/Space/English/scientific_data_and_models/global_marine_gravity_field/dtu10.ashx (last access: 20 June 2014), 2010.
- Balmaseda, M., Mogensen, K., and Weaver, A. T.: Evaluation of the ECMWF ocean reanalysis system ORAS4, *Q. J. Roy. Meteor. Soc.*, 139, 1132–1161, doi:10.1002/qj.2063, 2013.
- Balmaseda, M. A., Hernandez, F., Storto, A., Palmer, M. D., Alves, O., Shi, L., Smith, G. C., Toyoda, T., Valdivieso, M., Barnier, B., Behringer, D., Boyer, T., Chang, Y.-S., Chepurin, G. A., Ferry, N., Forget, G., Fujii, Y., Good, S., Guinehut, S., Haines, K., Ishikawa, Y., Keeley, S., Köhl, A., Lee, T., Martin, M., Masina, S., Masuda, S., Meyssignac, B., Mogensen, K., Parent, L., Peterson, K. A., Tang, Y. M., Yin, Y., Vernieres, G., Wang, X., Waters, J., Wedd, R., Wang, O., Xue, Y., Chevallier, M., Lemieux, J.-F., Dupont, F., Kuragano, T., Kamachi, M., Awaji, T., Caltabiano, A., Wilmer-Becker, K., and Gaillard, F.: The Ocean Reanalyses Intercomparison Project (ORA-IP), *Journal of Operational Oceanography*, submitted, 2014.
- Brown, S., Desai, S., Keihm, S., and Lu, W.: Microwave radiometer calibration on decadal time scales using on-earth brightness temperature references: application to the TOPEX Microwave radiometer, *J. Atmos. Ocean. Tech.*, 26, 2579–2591, 2009.

- Carrere, L., Faugère Y., and Ablain, M.: Improvement of pressure derived corrections for altimetry using the ERA-Interim dataset, *Ocean Sci.*, in preparation, 2014.
- Chambers, D. P. and Bonin, J. A.: Evaluation of Release-05 GRACE time-variable gravity coefficients over the ocean, *Ocean Sci.*, 8, 859–868, doi:10.5194/os-8-859-2012, 2012.
- 5 Couhert, A., Cerri, L., Legeais, J. F., Ablain, M., Zelensky, N. P., Haines, B. J., Lemoine, F. G., Bertiger, W. I., Desai, S. D., and Otten, M.: Towards the 1 mm/y stability of the radial orbit error at regional scales, *Adv. Space Res.*, online first, doi:10.1016/j.asr.2014.06.041, 2014.
- Dee, D. P., Uppala, S. M., Simmons, A. J., Berrisford, P., Poli, P., Kobayashi, S., Andrae, U., Balmaseda, M. A., Balsamo, G., Bauer, P., Bechtold, P., Beljaars, A. C. M., van de Berg, L., Bidlot, J., Bormann, N., Delsol, C., Dragani, R., Fuentes, M., Geer, A. J., Haimberger, L., Healy, S. B., Hersbach, H., Hólm, E. V., Isaksen, I., Kållberg, P., Köhler, M., Matricardi, M., McNally, A. P., Monge-Sanz, B. M., Morcrette, J.-J., Park, B.-K., Peubey, C., de Rosnay, P., Tavolato, C., Thépaut, J.-N., and Vitart, F.: The ERA-Interim reanalysis: configuration and performance of the data assimilation system, *Q. J. Roy. Meteorol. Soc.*, 137, 553–597, doi:10.1002/qj.828, 2011.
- 15 Dee, D. P.: ERA-CLIM: Final Publishable Summary Report, available at: http://www.google.fr/url?sa=t&rct=j&q=&esrc=s&source=web&cd=1&ved=0CCIQFjAA&url=http://www.era-clim.eu/FR_20140228.pdf&ei=Y1fzU9fGHcSb0QWnglG4AQ&usq=AFQjCNHMvEekOqsSUT_Jti_8n3oF1saw&sig2=m4ATu0xSexiWcYH-R00zPw&bvm=bv.73231344,d.d2k&cad=rja (last access: 20 June 2014), 2014.
- 20 Dibarboure, G., Pujol, M.-L., Briol, F., Le Traon, P. Y., Larnicol, G., Picot, N., Mertz, F., and Ablain, M.: Jason-2 in DUACS: updated system description, first tandem results and impact on processing and products, *Mar. Geod.*, 34, 214–241, 2011.
- Ducet, N., Le Traon, P. Y., and Reverdin, G.: Global high resolution mapping of ocean circulation from the combination of TOPEX/POSEIDON and ERS-1/2, *J. Geophys. Res.-Oceans*, 105, 19477–19498, 2000.
- 25 Fernandes, M. J., Lázaro, C., Nunes, A. L., Pires, N., Bastos, L., and Mendes, V. B.: GNSS-derived Path Delay: an approach to compute the wet tropospheric correction for coastal altimetry, *IEEE Geosci. Remote S.*, 7, 596–600, doi:10.1109/LGRS.2010.2042425, 2010.
- 30 Fernandes, M. J., Lázaro, C., and Nunes, A. L.: Improved Wet Path Delays for all ESA and Reference altimetric missions, *Remote Sensing of the Environment*, in preparation, 2014.
- Garcia, P. and Roca, M.: ISARD_ESA_L1B_ESL_CCN_PRO_064, issue 1.b, 15 November 2010, “On-board PTR processing analysis: MSL drift differences”, 2010.

- GCOS: Systematic Observation Requirements for Satellite-Based Data Products for Climate (2011 Update) – Supplemental Details to the Satellite-Based Component of the “Implementation Plan for the Global Observing System for Climate in Support of the UNFCCC (2010 Update)”, GCOS-154, WMO, 2011.
- 5 Henry, O., Ablain, M., Meyssignac, B., Cazenave, A., Masters, D., Nerem, S., and Garric, G.: Effect of the processing methodology on satellite altimetry-based global mean sea level rise over the Jason-1 operating period, *J. Geodesy*, 88, 351–361, doi:10.1007/s00190-013-0687-3, 2014.
- Hernandez, F., Ferry, N., Balmaseda, M., Chang, Y.-S., Chepurin, G., Fujii, Y., Guinehut, S., Kohl, A., Martin, M., Meyssignac, B., Parent, L., Peterson, K. A., Storto, A., Toyoda, T., Valdivieso, M., Vernieres, G., Wang, O., Wang, X., Xue, Y., and Yin, Y.: Sea level inter-comparison: initial results, *CLIVAR Exchanges*, 64, 18–21, 2014.
- 10 Ishii, M. and Kimoto, M.: Reevaluation of historical ocean heat content variations with varying XBT and MBT depth bias corrections, *J. Oceanogr.*, 65, 287–99, 2009.
- 15 Köhl, A.: Evaluation of the GECCO2 Ocean Synthesis: transports of volume, heat and freshwater in the Atlantic, *Q. J. Roy. Meteor. Soc.*, online first, doi:10.1002/qj.2347, 2014.
- Laxon, S. W., Giles, K. A., Ridout, A. L., Wingham, D. J., Willatt, R., Cullen, R., Kwok, R., Schweiger, A., Zhang, J., Haas, C., Hendricks, S., Krishfield, R., Kurtz, N., Farrell, S., and Davidson, M.: CryoSat-2 estimates of Arctic sea ice thickness and volume, *Geophys. Res. Lett.*, 40, 732–737, doi:10.1002/grl.50193, 2013.
- 20 Legeais, J. F., Ablain, M., and Thao, S.: Evaluation of wet troposphere path delays from atmospheric reanalyses and radiometers and their impact on the altimeter sea level, *Ocean Sci.*, under review, 2014.
- Le Traon, P. Y., Faugère, Y., Hernandez, F., Dorandeu, J., Mertz, F., and Ablain, M.: Can we merge GEOSAT Follow-On with TOPEX/POSEIDON and ERS-2 for an improved description of the ocean circulation?, *J. Atmos. Ocean. Tech.*, 20, 889–895, 2003.
- Morrison, H., Zuidema, P., Ackerman, A. S., Avramov, A., de Boer, G., Fan, J., Fridlind, A. M., Hashino, T., Harrington, J. Y., Luo, Y., Ovchinnikov, M., and Shipway, B.: Intercomparison of cloud model simulations of Arctic mixed-phase boundary layer clouds observed during SHEBA/FIRE-ACE, *Journal of Advances in Modeling Earth Systems*, 3, M06003, doi:10.1029/2011MS000066, 2011.
- 30

- Ollivier, A., Faugère Y., Picot, N., Ablain, M., Femenias, P., and Benveniste, J.: Envisat ocean altimeter becoming relevant for mean sea level trend studies, *Mar. Geod.*, 35, 118–136, 2012.
- Philipps, S. and Roinard, H.: Jason-2 reprocessing impact on ocean data (cycles 001 to 145), available at: http://www.aviso.altimetry.fr/fileadmin/documents/calval/validation_report/J2/Jason2ReprocessingReport-v2.1.pdf (last access: 20 June 2014), 2013.
- Pujol, M. I., Faugère Y., Ablain, M., Larnicol, G., Picot, N., and Bronner, E.: 20 years of high resolution DUACS/Aviso products reprocessed, *Mar. Geod.*, in preparation, 2014.
- Ray, R. D.: Precise comparisons of bottom-pressure and altimetric ocean tides, *J. Geophys. Res.-Oceans*, 118, 4570–4584, doi:10.1002/jgrc.20336, 2013.
- Roca, M. and Thibaut, P.: ISARD_CLS_SALP_PTR_TN_042, Issue 1.a, 19 November 2009, “PTR study(3) -SALP Project-”, 2009.
- Rudenko, S., Otten, M., Visser, P., Scharroo, R., Schöne, T., and Esselborn, S.: New improved orbit solutions for the ERS-1 and ERS-2 satellites, *Adv. Space Res.*, 49, 1229–1244, 2012.
- Rudenko, S., Dettmering, D., Esselborn, S., Schöne, T., Förste, C., Lemoine, J.-M., Ablain, M., Alexandre, D., and Neumayer, K.-H.: Influence of time variable geopotential models on precise orbits of altimetry satellites, global and regional mean sea level trends, *Adv. Space Res.*, 54, 92–118, doi:10.1016/j.asr.2014.03.010, 2014.
- Scharroo, R. and Smith, W. H. F.: A global positioning system based climatology for the total electron content in the ionosphere, *J. Geophys. Res.*, 115, A10318, doi:10.1029/2009JA014719, 2010.
- Thao, S., Eymard, L., Obligis, E., and Picard, B.: Trend and variability of the atmospheric water vapor: a mean sea level issue, *J. Atmos. Ocean. Tech.*, in press, 2014.
- Thibaut, P.: PTR Position and Drift Analysis – Theoretical Approach, RA-2 Quality Working Group Presentation, Reading, UK, May 2010.
- Valladeau, G., Legeais, J. F., Ablain, M., Guinehut, S., and Picot, N.: Comparing altimetry with tide gauges and argo profiling floats for data quality assessment and mean sea level studies, *Mar. Geod.*, 35, 42–60, 2012.
- von Schuckmann, K. and Le Traon, P.-Y.: How well can we derive Global Ocean Indicators from Argo data?, *Ocean Sci.*, 7, 783–791, doi:10.5194/os-7-783-2011, 2011.

List of SL_cci reports referenced in the paper and available on the SL_cci website

- SL_cci Product Validation Plan (PVP), available at: http://www.esa-sealevel-cci.org/webfm_send/101 (last access: 20 June 2014)
- SL_cci Product Specification Document (PSD), available at: http://www.esa-sealevel-cci.org/webfm_send/218 (last access: 20 June 2014)
- SL_cci Product User Guide (PUG), available at: http://www.esa-sealevel-cci.org/webfm_send/212 (last access: 20 June 2014)
- SL_cci User Requirement Document (URD), available at: http://www.esa-sealevel-cci.org/webfm_send/218 (last access: 20 June 2014)
- SL_cci Product Validation Internal Report (PVIR), available at: http://www.esa-sealevel-cci.org/webfm_send/221 (last access: 20 June 2014)
- SL_cci Validation Report, Executive Summary, available at: http://www.esa-sealevel-cci.org/webfm_send/187 (last access: 20 June 2014)
- SL_cci Validation Report, Instrumental Corrections, available at: http://www.esa-sealevel-cci.org/webfm_send/175 (last access: 20 June 2014)
- SL_cci Validation Report, Orbit Calculation, available at: http://www.esa-sealevel-cci.org/webfm_send/176 (last access: 20 June 2014)
- SL_cci Validation Report, Wet Troposphere Correction, available at: http://www.esa-sealevel-cci.org/webfm_send/177 (last access: 20 June 2014)
- SL_cci Validation Report, Atmospheric corrections (Dynamical, Atmospheric correction, Inverse Barometer, Dry Troposphere) available at: http://www.esa-sealevel-cci.org/webfm_send/181 (last access: 20 June 2014)
- SL_cci Validation Report, Ionosphere correction, available at: http://www.esa-sealevel-cci.org/webfm_send/178 (last access: 20 June 2014)
- SL_cci Validation Report, Sea State Bias correction, available at: http://www.esa-sealevel-cci.org/webfm_send/179 (last access: 20 June 2014)
- SL_cci Validation Report, Ocean tides correction, available at: http://www.esa-sealevel-cci.org/webfm_send/180 (last access: 20 June 2014)
- SL_cci Validation Report, Regional SSH bias corrections between altimetry missions, available at: http://www.esa-sealevel-cci.org/webfm_send/182 (last access: 20 June 2014)

- SL_cci Validation Report, Impact of altimeter satellite constellation, available at: http://www.esa-sealevel-cci.org/webfm_send/183 (last access: 20 June 2014)
- SL_cci Validation Report, Mapping Methods, available at: http://www.esa-sealevel-cci.org/webfm_send/184 (last access: 20 June 2014)
- 5 SL_cci Validation Report, High latitudes areas, available at: http://www.esa-sealevel-cci.org/webfm_send/185 (last access: 20 June 2014)
- SL_cci Validation Report, Coastal areas, available at: http://www.esa-sealevel-cci.org/webfm_send/186 (last access: 20 June 2014)

2057

Table 1. New corrections selected for the sea level calculation for the SL_cci project. The unfilled boxes indicate that the AVISO standards (release 2010) have been applied.

Corrections	ERS-1	ERS-2	Envisat	Jason-1	Jason-2	T/P	GFO
Orbit	Reaper combined orbit (Rudenko et al., 2012)		GDR-D CNES (Couhert et al., 2014)			–	–
Instrumental correction	–	–	New PTR Correction (Garcia and Roca, 2010)	–	–	–	–
Sea State Bias			V2.1 release		GDR-D release	–	–
Wet Troposphere			GPD corrections (Fernandes et al., 2010, 2014)				–
Dry Troposphere			ERA-interim based (Carrere et al., 2014)				
Dynamical atmospheric corrections			ERA-interim based (Carrere et al., 2014)				
Ocean tide			GOT 4.8 (Ray et al., 2013)				
Mean Sea Surface			DTU 2010 (Andersen et al., 201)				

2058

Table 2. Error budget of SL_cci products for the main climate scales.

Spatial Scales	Temporal Scales	Altimetry Errors	User requirements
Global MSL	Long-term evolution (> 10 years)	< 0.5 mm year ⁻¹	0.3 mm year ⁻¹
	Interannual signals (< 5 years)	< 2 mm over 1 year	0.5 mm over 1 year
	Annual signals	< 1 mm	Not defined
Regional MSL	Long-term evolution (> 10 years)	< 3 mm year ⁻¹	1 mm year ⁻¹
	Annual signals	< 1 cm	Not defined

2059

Impact of new SL-CCI in SSH calculation in comparison with AVISO standards			Definition of the indicator value		
Climate Applications	Temporal Scales	For 1 mission (Envisat, ERS, Jason, T/P,...)	Significant impact	Low impact	No impact detected
Global Mean Sea Level	Long-term evolution (trend)	NO IMPACT	Trend > 0.15 mm/yr	Trend > 0.05 mm/yr	Trend < 0.05 mm/yr
	Inter annual signals (> 1 year)	+ LOW IMPACT	Amplitude > 0.5 mm	Amplitude > 0.2 mm	Amplitude < 0.2 mm
	Annual and semi-annual Signals	- STRONG IMPACT	Amplitude > 1 mm	Amplitude > 0.2 mm	Amplitude < 0.2 mm
Regional Mean Sea Level	Long-term evolution (trend)		Trend > 0.5 mm/yr	Trend > 0.1 mm/yr	Trend < 0.1 mm/yr
	Annual and semi-annual Signals		Amplitude > 5 mm	Amplitude > 0.5 mm	Amplitude < 0.5 mm
Mesoscale	Signals < 2 months		Crossovers Variance differences > 1 cm ²	Crossovers Variance differences > 0.2 cm ²	Crossovers Variance differences < 0.2 cm ²

Figure 1. Definition of the temporal and spatial scales (on left panel) and the indicator value table (on right panel) allowing the impact characterization in sea level of new SL_cci corrections in comparison with corrections defined as reference (AVISO-2010).

2060

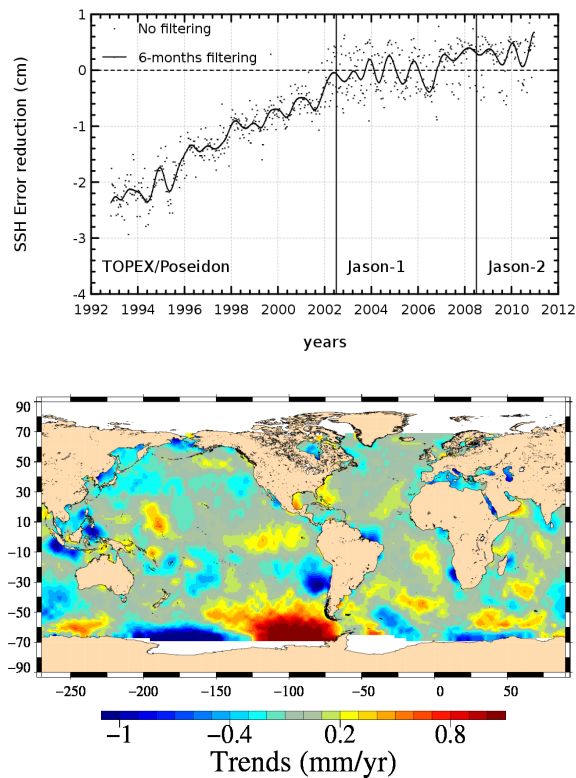


Figure 2. Evolution of the sea level error reduction applying the new Dynamical Atmospheric and dry troposphere corrections derived from ERA-Interim reanalyses instead of operational ECMWF fields (top) and impact on sea level regional trends (bottom).

2061

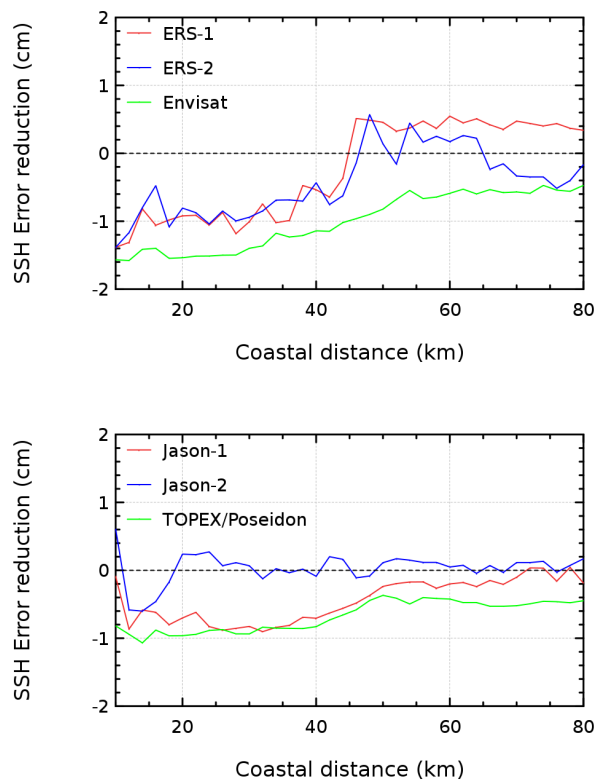


Figure 3. Evolution of the error reduction vs. the coastal distance applying the new GPD wet troposphere corrections instead of the reference radiometer-based corrections used in AVISO-2010.

2062

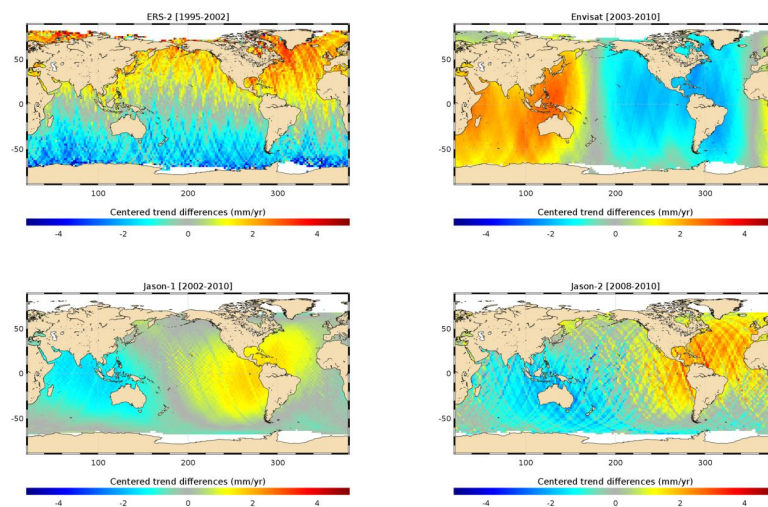


Figure 4. Impact of the new orbit solutions on the regional sea level trends for ERS-2 (Reaper combined vs. DEOS DGM-E04 orbit solutions), Envisat, Jason-1 and Jason-2 (CNES GDR-D vs. CNES GDR-C orbit solutions).

2063

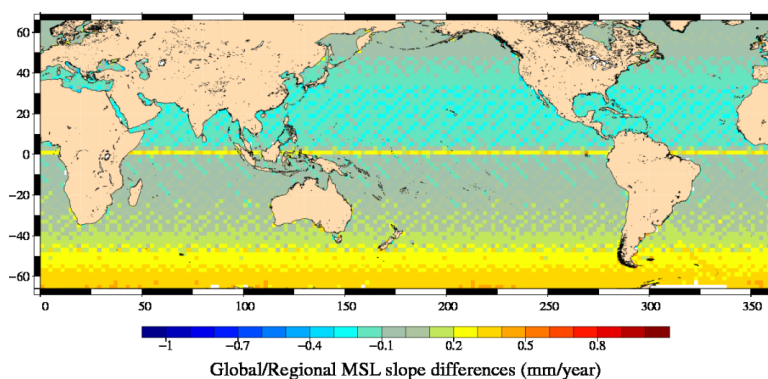


Figure 5. MSL trend differences from 1993 to 2010 between sea level maps without and with regional bias corrections for TOPEX/Jason-1 and Jason-1/Jason-2.

2064

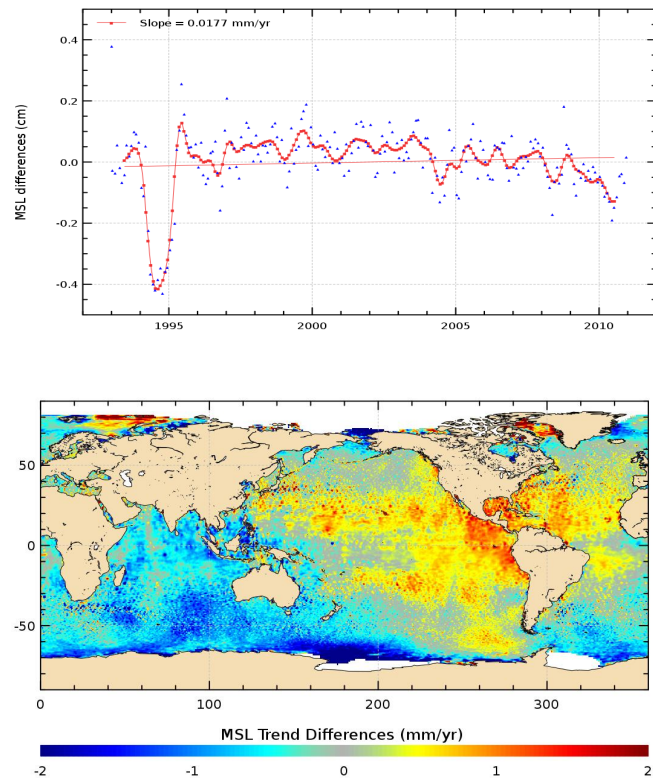


Figure 6. GMSL (top panel) and regional sea level (bottom panel) differences between the SL_cci (release 1.1) and AVISO products (release 2010).

2065

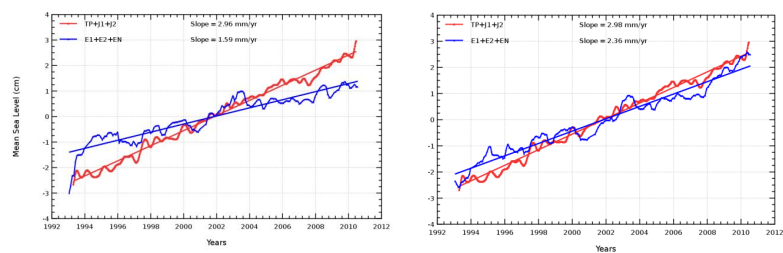


Figure 7. GMSL time series separating ERS-1/ERS-2/Envisat and TOPEX/Jason-1/Jason-2 altimeter missions using alternatively the old (AVISO-2010 standards) on left and new altimeter correction (SL_cci) on right.

2066

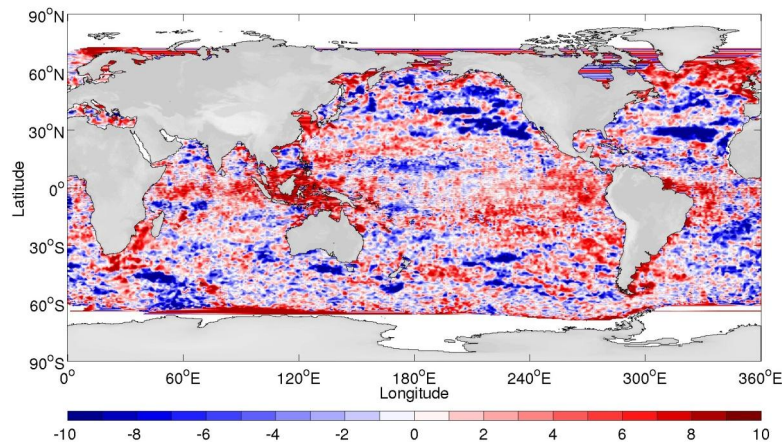


Figure 8. Ratio of the RMS differences RMS_AVISO and RMS_SL_cci between the GECCO model and the satellite time series of ERS-1, ERS-2 and ENVISAT in percent improvement.

2067

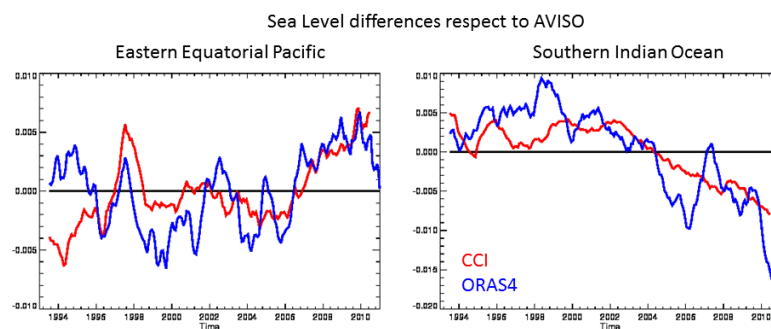


Figure 9. Differences (m) in the sea level time evolution (12 month running mean) respect the AVISO product of SL_cci (red) and ORAS4 (blue). Left: Eastern Equatorial Pacific (5° N–5° S, 130–90° W). Right: Southern Indian Ocean (30–70° S, 20–150° E). The differences in trends between SL_cci and AVISO are confirmed by ORAS4. In the Eastern Pacific, both ORAS4 and SL_cci have stronger ENSO signature than AVISO.

2068

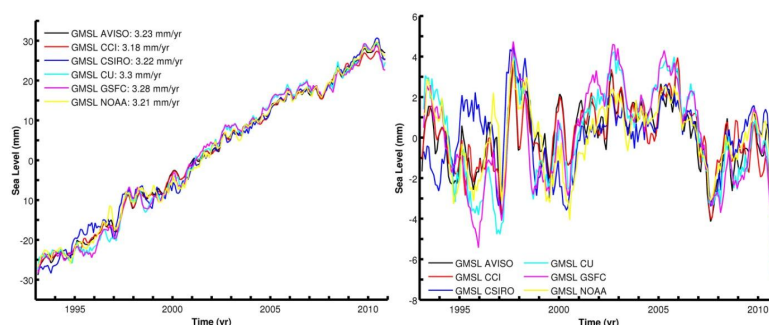


Figure 10. GMSL based on multi-mission satellite altimetry data processed by different groups (including SL_cci project). Left/right panel: with/without the global mean trend.

2069

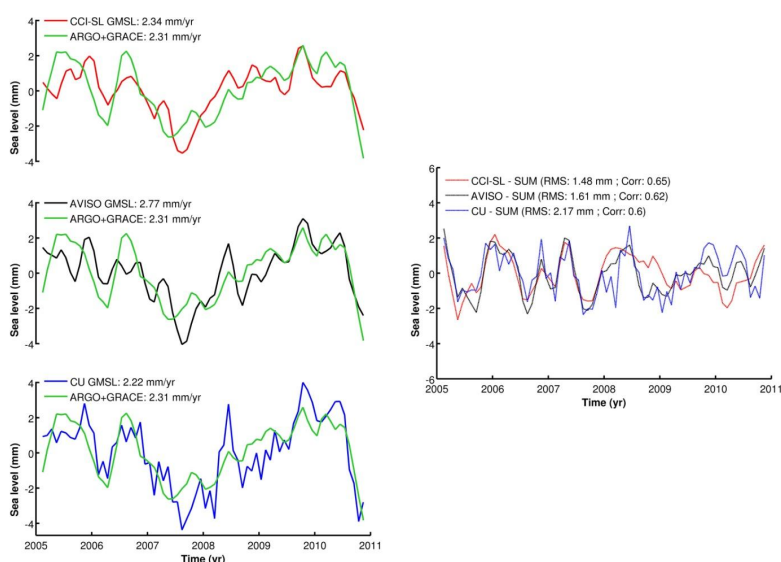


Figure 11. Sum of steric and ocean mass component based on Argo and Grace data (see text Sect. 5.4) (green curve) over the January 2005–December 2010 time period and different GMSL products (left panels). Right panel: difference between the GMSL products and sum of components.

2070

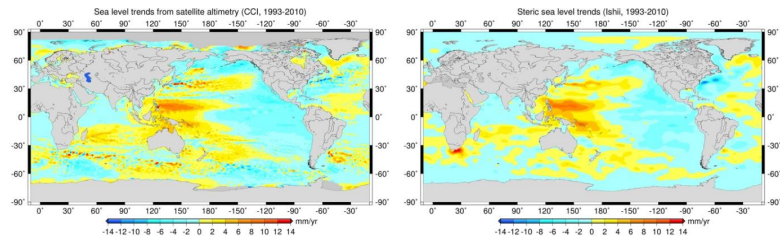


Figure 12. Maps of sea level trends (left) and steric sea level trends (right) over the 1993–2010 period, respectively from altimeter measurements (SL_cci products) and from IK13 data.